

T H E

EDITION 4 AUTUMN

# sharp

T R A V E L L E R



## MILDURA

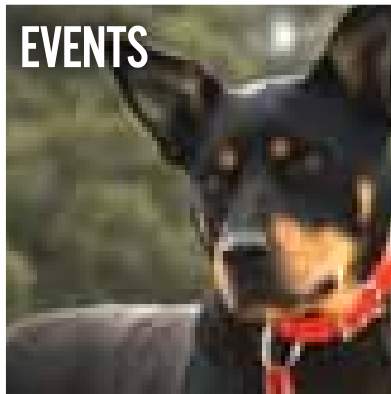
The Murray River. Flowing, Refreshed, Healthy and Spectacular

### CUISINE



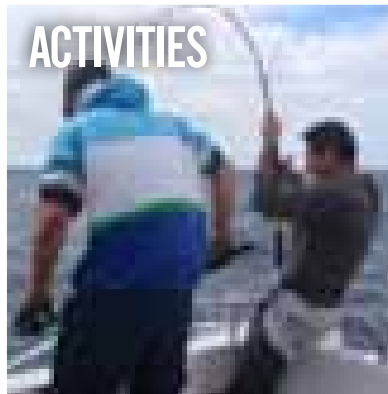
FINE DINING ON  
FLINDERS ISLAND

### EVENTS



MILLION DOLLAR DOGS.  
KELPIES IN ACTION

### ACTIVITIES



ANGLING FOR A CATCH IN  
PORTLAND

### WINE



GRAMPIAN GREAT  
GRAPE ESCAPE



With our **\$111 flights\***  
**...anyone can fly!**



Hamilton, Portland, Avalon, Essendon, Adelaide, Mildura, Port Augusta

**1300 55 66 94 | sharpairlines.com.au**

\*Conditions Apply. One way only. Fares are only available through www.sharpairlines.com.au. Seats are limited and may not be available on all flights or peak days. Must Travel between 14 February and 24 December 2011. Fares are non-refundable and will be forfeited if you do not fly. No changes can be made to this fare booking, fares are not transferable and no name changes are permitted. Credit Card bookings only.



## Contents



- What's On . . . . . 5
- The Sharp Files . . . . . 6
- Mildura. A Unique Holiday Experience . . . . . 8
- Flinders Island. A Common Ground . . . . . 12
- Portland. Angling for a Catch . . . . . 15
- Casterton - Million Dollar Dogs . . . . . 16
- An Autumn Weekend in Melbourne . . . . . 18
- Flinders Island - Seasonal Delights . . . . . 20
- Business Profile - Quest Apartments . . . . . 21
- Sharp Minds . . . . . 22
- Sharp Kids . . . . . 23
- Flight Schedules . . . . . 24
  - > Melbourne (Essendon). . . . . 24
  - > Geelong (Avalon) . . . . . 24
  - > Adelaide . . . . . 25
  - > Flinders Island & Launceston . . . . . 26

### STONE

BUSINESS ADVISERS &  
 CHARTERED ACCOUNTANTS

- Business Advisory
- Accounting
- Taxation
- Financial Management
- Superannuation
- Corporate Affairs
- Consulting



"We have developed a young team of highly skilled professionals to support your business."



P + 61 3 5523 2287  
 W stoneba.com.au

ADELAIDE

PORTLAND

MELBOURNE



## Sharp Contacts

**T: 1300 55 66 94**

F: 03 5574 8258

E: [book@sharppairlines.com.au](mailto:book@sharppairlines.com.au)

W: [sharppairlines.com.au](http://sharppairlines.com.au)

### Head Office

Hamilton Airport  
Hensley Park Rd  
Hamilton VIC 3300

### Adelaide Office

Sir Richard William Ave  
Adelaide Airport SA 5950

### Melbourne Office

Main Terminal  
Essendon Airport  
Hargrave Ave  
Essendon Fields VIC 3041

### Portland Office

Main Terminal  
Portland Airport  
Cashmore Road  
Portland Airport VIC 3305

### Flinders Island Office

Main Terminal  
Flinders Island TAS 7725

### Launceston Office

Evandale Road  
Western Junction TAS 7212

### Media & Marketing

Organised Success

T: 1300 30 48 03

E: [marketing@sharppairlines.com.au](mailto:marketing@sharppairlines.com.au)



## Managing Director's Welcome

This edition of the Sharp Traveller focuses on another of our wonderful destinations – Mildura. The thriving city is filled with opportunities for good food and wine, culture and entertainment, including the majestic Murray River which is at full flow at the moment, following our heavy summer rains.

Those rains, as well as other extreme weather events, have caused some delays to a number of our services. I would like to apologise to any customer who has been inconvenienced by these delays and reassure you that Sharp Airlines will always do everything within its power to fly our passengers safely and on time.

I am sure you will join me in wishing all of those Australians affected by flood, cyclone and bushfire the best of luck as they recover from these incredible events – which I hope we will not see repeated for a long, long time.

Here at Sharp Airlines we are still excited by our services to Flinders Island. It really is a hidden gem which we hope more and more people will discover through our services. The community on Flinders Island is remarkable – passionate, enthusiastic and extremely welcoming. I will be travelling to Flinders Island for lunch with the Gourmet Farmer and the team from A Common Ground on 16th April, which you can read about in this edition.

Our network also includes Fly In Fly Out (FIFO) services for the resources sector, transporting employees from Moomba in outback South Australia to Launceston, from the Flinders Ranges through to Brisbane.

This year Sharp Airlines will proudly carry over 100,000 passengers throughout Victoria, South Australia and Tasmania. Our ever-expanding network is opening up more regions to tourism and business, helping more people to discover the hidden beauty of many regions of Australia.



**Malcolm Sharp**

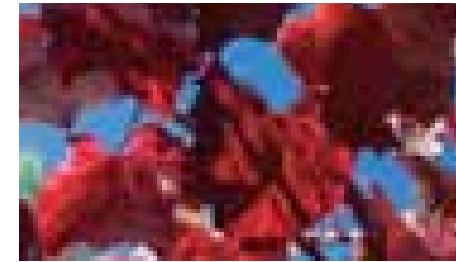
*Managing Director*

Is your event or activity not listed here?

Email the details to [marketing@sharppairlines.com.au](mailto:marketing@sharppairlines.com.au)



## What's On

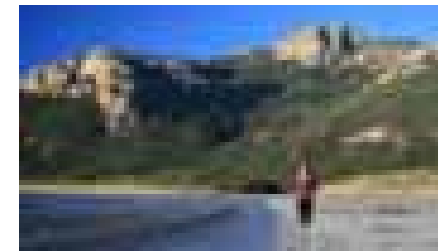


**Grampians Grape Escape**

30 April and 1 May

Treat yourself to a gastronomic getaway in the Grampians and indulge in delicious gourmet fare, fabulous wines and creative cooking demonstrations at the Grampians Grape Escape. With more than 100 food and wine stalls gathered in front of the spectacular backdrop of the Grampians National Park - it is a sensational weekend not to be missed.

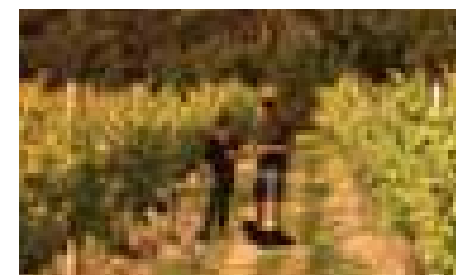
Web: [grampiansgrapeescape.com.au](http://grampiansgrapeescape.com.au)



**Flinders Island Fun Run**

4 September

Dust off your sand shoes and limber up your hamstrings in preparation for the Flinders Five, a 5km fun run, walk or wheel on the magnificent Flinders Island. It's a great day out for the whole family, set amongst stunning pristine scenery.



**Pick'n'Party at Unavale Winery**

weekends in April & May

Unavale Vineyard is a small boutique winery on Flinders Island, which produces outstanding wines in a unique island environment. The whole winemaking process is completed on Flinders Island and you have the chance to be part of it by visiting during harvest time.

Web: [unavale.com.au](http://unavale.com.au)



## Country Racing

Country Racing meets offer a fun and exciting day out for the whole family. Whether you win or lose your bets, Country Racing is a great excuse to get dressed up and head out for a day of frocks, fillies and fabulous scenery in country Victoria.



**Hamilton Cup Carnival**

16 and 17 April

Get set for another exciting Hamilton Cup Carnival where there will be plenty on offer for the whole family, including live music, Fashions on the Field, entertainment for the kids and a selection of great food and wine.

**Mildura Racing**

21 and 22 May

With a Mediterranean climate perfect for an autumn day out, the Mildura race course is surrounded by the mighty Murray River and miles of vineyards. The Euston Club Resort Mildura Cup Carnival offers fashions on the field, kids' activities and plenty of space on the lawn for your own picnic.

Web: [countryracing.com.au](http://countryracing.com.au)



**Melrose Fat Tyre Festival**

10-13 June

Celebrate the long weekend with a single track mountain bike riding festival in the Southern Flinders Ranges at Melrose, less than an hour from Port Augusta. Some extreme mountain bike riding will wrap up with a parade in the main street and a Mexican party on Sunday night.

Web: [otesports.com.au](http://otesports.com.au)



**Adelaide Cabaret Festival**

10-25 June

Experience a musical delight with a line-up of international stars and performances covering all cabaret genres.

Web: [adelaidefestivalcentre.com.au](http://adelaidefestivalcentre.com.au)

# The Sharp Files



## Services & Schedules

We have revised our services based on customer demand and feedback with the aim of offering improved flight schedules.

For the latest schedules go to pages 24 -26. or visit [sharpairlines.com.au](http://sharpairlines.com.au)

### Did you know?

1. This year we will carry in excess of 100,000 passengers throughout Victoria, South Australia & Tasmania.
2. Our network spans with Airlines Services and FIFO services from Moomba to Launceston the Flinders Ranges through to Brisbane.
3. Our Commercial Pilot Airline Training is renowned throughout the world as leaders in its field.
4. As the only airline service to Flinders Island Sharp Airlines understands the great responsibility is serving this isolated Bass Strait community.



## New Sharp Services connect Hamilton and the Grampians to Adelaide

Sharp Airlines has again expanded its flight services, and will now offer direct flights from Hamilton to Adelaide. The new service will operate three days per week.

"For the Grampians Region this new service will assist in the development of business, tourism and freight transport," said Sharp Airlines owner Mal Sharp.

Tourism Victoria Chief Executive, Mark Stone, said providing travellers with increased opportunities to fly directly to Victoria is great for the local tourism industry.

"Tourism Victoria welcomes the increase in air services to our state and congratulates Sharp Airlines on its expansion in Victoria," Mr Stone said.

"This move will strengthen our regional

airline offering and make it easier for South Australian tourists to come to the Grampians and experience the region's outstanding food and wine, nature-based activities and breathtaking scenery," he said.

Southern Grampians Shire Council Mayor Cr Marcus Rentsch believes that Sharp Airlines will bring multiple benefits.

"I would to congratulate Sharp Airlines on their continued expansion and I look forward to social, economic and tourism benefits that the new services to Adelaide and Tasmania will bring to Hamilton and the Southern Grampians Shire," he said.

Sharp Airlines' continued expansion makes it one of the most important providers of regional airlines services throughout South East Australia.



## Sharp Airlines Commercial Pilot Cadets

Ben DiManno (Instructor) Jameson Hunter, Jasmeet Dhaliwal, Jeremy Fry, John Fingleton, Lachlan Wardlaw, Daniel Atwell, Sam Fellows, Nick Beever, Jacques Beukes David Tessari, Simon Kuhne, Mark Johnstone, Joshua Moody

Sharp Airlines' First Officer Cadetship Program provides an outstanding career opportunity designed to equip trainees with the ability to move confidently and successfully into the world of commercial aviation. Sharp Airlines' cadets graduate with the skills, qualifications and experience necessary

for finding employment within the aviation industry. Sharp Airlines' cadets also have the advantage of experiencing all the hands-on activities of a busy, commercial airline company while achieving their qualification. Pictured above are the Sharp Airlines 2011 Cadets.

### Sharp Airlines Office Hours

Bookings & Enquiries

Monday to Friday - 7am to 7pm EST

Saturday - 8am to 12pm EST

Sunday - 1pm to 6pm EST

Public Holidays - 10am to 5pm EST

CLOSED - Good Friday and Christmas Day



New schedules and New services

For more information go to page 24-26 or visit [sharpairlines.com.au](http://sharpairlines.com.au)

### Flight Camp with Sharp Airlines

The Sharp Airlines' Flight Camp is an introduction to the world of aviation. This camp has been put together to enable students to experience as many facets of the industry as possible and to make an informed decision about their future careers. With four hours of flying during the week, lectures from many industry professionals and guided tours through airport facilities the Sharp Airlines Flight Camp is a great way to discover what aviation is all about.

Next Cadet Camp  
11th to 15 July 2011

For bookings and further information please contact Sharp Airlines - [book@sharpairlines.com.au](mailto:book@sharpairlines.com.au), 1300 55 66 94

Go to   

**Visit [FlindersIsland.com.au](http://FlindersIsland.com.au)**

*Flinders ISLAND*  
Tasmania



# Mildura

The Mildura region is renowned for its big skies, rich earth and welcoming locals. It invites visitors to experience its natural beauty, great local produce and wine served up at countless quality restaurants and available at markets, eateries and cellar doors. Discover its stories of explorers, settlers and farmers, and stay overnight at comfortable local accommodation.

Mildura is a thriving city, surrounded by a collection of small but interesting towns in the Mallee region. With a busy arts community, Mildura hosts a range of cultural events and festivals, meaning that you will always have something to do in Mildura, no matter when you visit.

Head to Mildura in March for the Mildura Wentworth Arts Festival, featuring events such as Music under the Stars at the dramatic Perry Sandhills. In July, the Mildura Writers' Festival entices lovers of words to the region. In September, the Mildura Country Music Festival presents Australia's biggest showcase of independent country music artists. The Mildura Jazz and Wine Festival in November combines the best of Australian modern and traditional jazz with the region's fine wines at wineries and on riverboats, restaurants and along streets throughout the town.

Mildura is also a gastronomic hub, with the enigmatic Stefano de Pieri leading the charge, and encouraging new generations of food, wine and boutique beer producers. Surrounded by vineyards, fields of fruit and fresh produce, Mildura will always have a gourmet feast on offer.




AAAH! WILLANDRA HOUSEBOATS

Peace... tranquility... award winning houseboats...  
Murray River... Mildura

Ph 03 5024 7770 | [www.willandrahouseboats.com.au](http://www.willandrahouseboats.com.au) 



# All aboard... for a unique holiday experience

Exploring the Murray and Darling Rivers by boat – either as part of an organised tour or a house boat of your own – has become an Australia rite of passage.

The township of Mildura is situated on the Murray River and has the distinction of being the last major town the Murray River flows through before reaching South Australia. Downstream is the pleasant town of Wentworth, where the Murray and the Darling Rivers meet.

At the confluence of the Darling and Murray Rivers, it's possible to see the blue of the Darling and the brown of the Murray mixing into one before they continue west as the Murray.

You can see up close small and large native fish (there are some 40 species in the Murray) as they make their journey downstream. Depending on the season, it's possible to spot whistling kites, spoonbills and pelicans. As you head

further away from Wentworth, the vista becomes decidedly outback; saltbush grows in red dirt mere metres away from the Darling, and huge gnarly gums dot the banks.

Plenty of people use the rivers for recreation, especially around the Easter and Christmas holiday periods. Locals have invented numerous ways to launch themselves into the river, from slides that jut out from the bank to waterside trampolines and tyre swings that dangle from river red gums. There's a huge variety of watercraft, too - fully-equipped air conditioned houseboats bearing jacuzzis are moored next to smaller, more casual vessels bearing boxing kangaroo and 'G'day mate' flags.

It's also possible to explore the Murray from Mildura by paddlesteamer. On Thursdays you can leave the car behind in Mildura and catch the historic PS

Rothbury to Trentham Estate Winery, about 15 kilometres away. Enjoy a barbeque lunch on grassy green banks of the Murray while sampling Trentham Estate's wines.





# Cruising along the Majestic Murray River

## Mildura and the Murray at their best

After recent rains, the Murray River is flowing refreshed, healthy and spectacular. And at Mildura you'll see the Murray at its best.

Mildura is where the Mediterranean meets the Outback and, after the rain events of recent months, Australia's most famous waterway is being transformed as new life and new growth also streams into surrounding creeks and billabongs. Receding high waters continue to attract wildlife and reveal vegetation that hasn't been seen for years.

So now is the ideal time to come and see the Mildura region like you've never seen it before.

Only a 60 minute flight from Adelaide, Mildura regularly surprises visitors with its quality arts and cultural scene complemented by modern and vibrant shopping precincts. As you'd expect, there's plenty of great cafes, bakeries and coffee shops plus an abundant range of stylish accommodation to suit all tastes.

Indulging in fresh local produce by meeting growers at the twice-monthly farmers market is part of the fun. The

toughest test for golfers will be deciding which of the lush green local courses they'll choose. Relaxing on a houseboat, paddling a canoe or cruising on a historic paddleboat are other ways you can experience the Murray.

Neighboring Wentworth, a charming village brimming with history and attractions, is also home to the meeting point of the Murray and Darling Rivers.

So much to see and do, plus plenty of new nature-based opportunities providing perfect reasons to visit.

Whether you're looking for a bite-sized break or a week long banquet, Mildura has the perfect holiday choice to whet your appetite: Fresh local food served with friendly hospitality plus lashings of clean country air and, of course, a magic river to relax by. All served with an irresistible array of award-winning wines.



For more information about Mildura visit [visitmildura.com.au](http://visitmildura.com.au)

Sharp Airlines flies to Mildura from Adelaide six days per week.

The mighty Murray River has been returned to its majestic glory with the summer rains. High river levels and rainfall have rejuvenated this great Australian icon.

There is no better time to explore the river, the wildlife, the scenery and the wonderful array of activities that the river and its towns have to offer.

Aaah! Willandra Houseboats is a leading luxury houseboat accommodation provider in Mildura, Victoria. They specialise in luxury escapes for couples, families and friends on the Murray River, surrounded by the peace and tranquility of nature.

The multi award-winning Aaah! Willandra Houseboat fleet consists of nine beautifully appointed houseboats, ranging from Deluxe to Ultimate Luxury. All houseboats have a spa, fully equipped kitchen and plenty of room to relax and enjoy the view.

The team at Aaah! Willandra Houseboats pride themselves on delivering a product and service that exceeds customer expectations. Proud and passionate operators, Chris and Marina Durban have been involved in the tourism industry for over 25 years. After working within numerous resorts across Australia, they chose to settle in Mildura after falling in love with the river, the locals and the weather.

Striving to offer a unique holiday experience at great value for money, the team at Willandra have put together a range of packages which showcase the best the Mildura region has to offer. Packages will appeal to all travellers; from families, food and wine enthusiasts, sporting enthusiasts, couples and those seeking a truly unique outback Australia experience.

Packages include; Family Fun Package, Gourmet Getaway Package, which includes dinner at the award-winning, Stefano's Restaurant, Mildura Golf Holiday Package and the new Girls Pamper Package, ideal for hens or birthday celebrations.



### Up Close

Aaah! Willandra Houseboats

Location: Opposite Mildura Dockside Wharf

Contact: 1800 800 842

Web: [willandrahouseboats.com.au](http://willandrahouseboats.com.au)



# A common ground

FLINDERS ISLAND

In recent times, consumers have become more aware of the journey the food on their plate has taken – the journey from paddock to plate. Local produce, food miles and slow food are terms that we have become familiar with and many of us – town and country alike - have discovered the joys of growing our own vegetables.

Now a team of growers, producers, chefs and dedicated foodies across Tasmania, including Flinders Island, have decided to come together to share their produce,

expertise and most of all their passion for 'real food' with a wider audience.

After gaining valuable recognition for Tasmanian artisan producers on the SBS television series The Gourmet Farmer, Matthew Evans, Ross O'Meara and Nick Haddow decided to continue that work.

In The Gourmet Farmer, Australia's toughest food critic, Matthew Evans, swapped his city life for a taste of some small farm living in Tasmania. This series plotted the new trajectory of Matthew's life: from living in Australia's biggest and busiest city to a country life in an isolated part of the island state. He put to the test his primary belief that we should all be directly connected with our food: either



Pictured: (L to R) Nick Haddow, Ross O'Meara Matthew Evans at past Common Ground events.

by growing it or rearing it ourselves, or sourcing it from local producers.

Having spent most of his life writing about what good food actually is, Matthew wanted to go directly to the source. He aimed to find the best local produce: to rear and grow as much as he could himself. He wanted to get pigs, chooks, sheep and a cow. He wanted to grow things for the plate and have his farmhouse table groaning under huge platters of food. And then he wanted to have lots of his old and new friends over to share in the spoils.

This tradition of producing, sharing and enjoying continues with 'A Common Ground'.

"A Common Ground is a collaboration between artisan growers, farmers, fishermen, winemakers, brewers and producers of Tasmania," said Nick Haddow.

"We want to reconnect people who love eating great food with the great people who produce it. We feel that both the producers and the diners are equal sides of the equation and we aim to honour both," he said.



A Common Ground is kind of a restaurant, but one that roves the regions of Tasmania, hunting and gathering, meeting the growers and makers, learning from them about their produce and passing this on to the diners.

"The calendar for A Common Ground will feature a series of long table lunches. We set up our table right in the places where the food comes from – a field of potatoes, an olive grove, a jetty, a greenhouse, a paddock.

"We will cook you a slow meal that will showcase the region's produce in a way that is often talked about but rarely done. You might be sitting in a field surrounded by the same carrots you are eating. At your table might be the local farmer that raised the lamb or caught the fish on your plate.

"All ingredients will come from the region. This is real food," Nick said.



## Up Close

A Common Ground Lunch

Time & Date: 12.30pm on Saturday 16th April, 2011 **SOLD OUT**  
\*for future Common Ground Events check the website

Where: An amazing location on Flinders Island

Cost: \$170 per person

Contact: Nick Haddow 0428 606 332

Email: eat@acommonground.com.au

Website: acommonground.com.au

# The Furneaux Tavern

Flinders Island Tasmania



Situated on the waterfront the Furneaux Tavern is a favourite meeting place for locals and visitors and has one of Flinders Island's best views from the bar.

The Furneaux Tavern offers comfortable accommodation with 12 motel style units set amongst an acre of native gardens and magnificent water views.

The Tavern offers bistro dining in the Shearwater Restaurant, which serves local produce 7 days a week all year round.

Phone: 03 6359 3521

furneauxtavern.com.au

# FLINDERS ISLAND HOLIDAY PALANA RETREAT

Modern two storey, two bedroom, two bathroom accommodation with spa, open fire etc...

Overlooking Blyth Bay, Pratts River and the Inner and Outer Sister Islands.

Car available.

Liquor License and Free Internet access.

We offer a pickup and delivery service from Whitemark Airport.

Contact Judy Armstrong & Daryl Butler

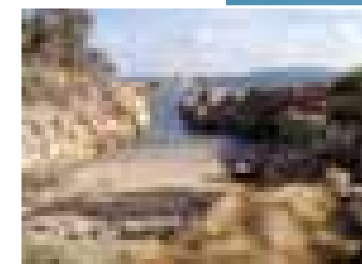
Phone: (03) 6359 8566

Mobile: 0438 622 555

Email: daryl@palanaretreat.com.au

Web: www.palanaretreat.com.au

4756 Palana Rd, Flinders Island



# AVIS FOR GREAT RATES

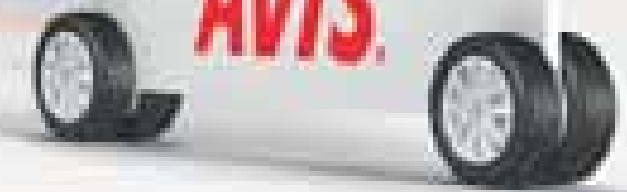
PLUS



Earn Points

Frequent flyer

AVIS



At Avis we are proud of our service – but we also have great rates, special deals and Qantas Frequent Flyer points.\*



Visit [avis.com.au](http://avis.com.au)

\*You must be a member of the Qantas Frequent Flyer program to earn points. Membership and points are subject to the terms and conditions of the Qantas Frequent Flyer program. A joining fee may apply. For more information about earning points with Avis visit [avis.com.au](http://avis.com.au)

# Portland

## Angling for a catch in Portland

If angling is your passion – or even just an interest – then autumn and winter are the perfect seasons for you to try your hand at catching a majestic Southern Blue Fin Tuna.

Each year starting in April, the Southern Blue Fin Tuna migrate from the west coast right across the front of Portland following their path of yearly migration. Southern Blue Fin Tuna are one of the best and most sought after game fish in southern waters. Catches can range in sizes of 8kg to 150kg. At any size they give plenty of fight and excite even the hardest of anglers.

They are one of the fastest swimmers in the ocean and often travel at speeds of up to 70km per hour, which translates to an awesome effort on behalf of the Tuna before you get it to the boat!

Matthew Hunt Fishing Services primarily fish for the Southern Blue Fin Tuna in the months of March through to the end of August. Tuna numbers fluctuate during this period as various schools pass through Portland waters.

Being out amongst them virtually every day of the season, season after season, gives Skipper Matthew Hunt a wealth of knowledge you just can't find elsewhere.

"The best way to catch a Southern Blue Fin Tuna, as a recreational fisherman, is to troll the waters with lures, although some minor success has been had with cubing and live baits.

"Often the Tuna are out at the shelf where the temperature fluctuates. On our charters we only have a maximum of five people, which increases the angler's chance of getting hooked on to a Southern Blue Fin Tuna.

"We cater to everyone's needs from the humble beginners right through to the experienced anglers. So whether you are a first timer or simply looking for something different in fishing, we can provide it.

"We can't guarantee your catch, but we can guarantee that every possible avenue is exhausted to get results," he said.

Up Close

---

**Matthew Hunt**

---

Location: Portland

---

Contact: 0409 008 441

---

Web: [Fishingservices.com.au](http://Fishingservices.com.au)



Your clients are waiting.



(03) 5309 0800  
[ascetcreative.com](http://ascetcreative.com)





# Million Dollar Dogs

Australian Kelpie Muster

It would be hard to find a festival more ubiquitously Australian than the annual Kelpie Muster in Casterton.



While Casterton has a long association with the Kelpie, it is only in recent years that the town has become synonymous with the Australian working dog breed.

The story began over 100 years ago when stockman Jack Gleeson embedded the kelpie into Casterton's history with one unknowing act: the trading of a horse for a kelpie pup on the banks of the Glenelg River. Subsequent research has shown that the Kelpie breed had originated from Warrock Homestead, Casterton.

While the links go back many years, it was only just over 20 years ago that the idea of celebrating the town's association with the Kelpie was born.

While attending a clearing sale in Dartmoor in 1989, Ian "Spud" O'Connell looked on as an old black dog worked stock in front of an audience of potential buyers prior to being auctioned. This allowed the audience to observe its capabilities before it was sold. Mr. O'Connell embraced the concept and, in conjunction with the Casterton Apex club, developed the idea of hosting a working

auction to raise funds for the community and celebrate the town and breed.

Mention the town of Casterton these days and the image of an Australian icon springs immediately to mind. The working dog auctions started to draw crowds – of bidders and observers. The interest it raised eventually led to the establishment of the accompanying Casterton Kelpie Festival, which commenced in 2001. In its first year the festival was a huge hit with families and gained national media attention.

With the 13th anniversary of this event which has put Casterton on the map, and the Kelpie on the lips of dog lovers, is it any wonder that the locals are looking

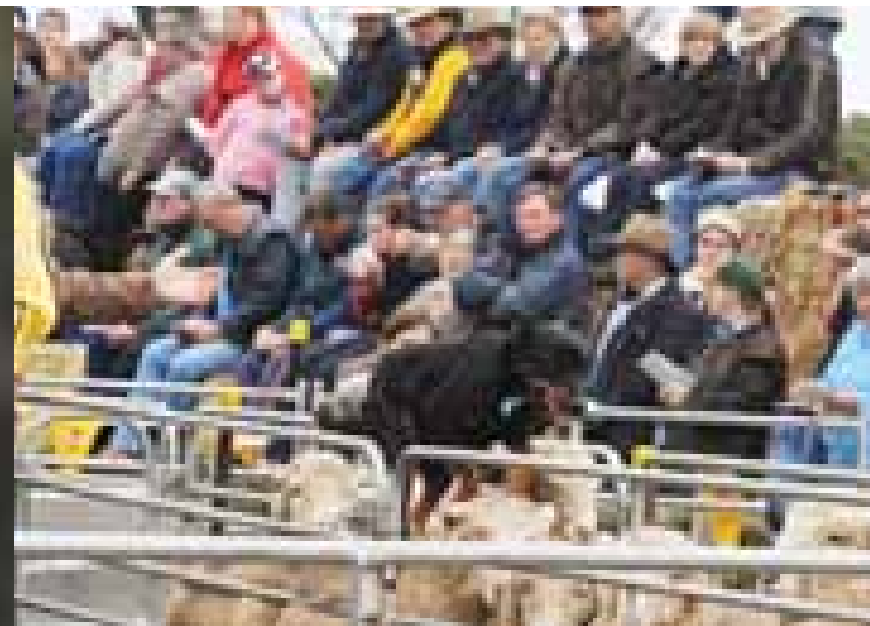
### Up Close

Date: 11th and 12th June - Queen's Birthday long weekend

Location: Various locations around Casterton

Cost: Most Festival events are free

Web: [www.kelpies-casterton.org](http://www.kelpies-casterton.org)



forward to entertaining the crowds and providing hospitality as only they know how?

With festival events such as the Poets Breakfast, Iron Kelpie Hill Climb, Stockman's Challenge, Kelpie Triathlon and the Novelty Events such as the hilarious Mutton Mayhem- audiences are kept entertained and amused all weekend.

But one of the most famous events is undoubtedly the Kelpie High Jump and hundreds of people crammed into the make shift arena to catch a glimpse of the ever increasingly popular event. The hour long event is insanely dramatic; a spectacle that has the audience holding its breath one moment and exploding into cheers the next.

The family fun of the Casterton Kelpie Festival will start on Saturday, 11th June 2011 with key events such as the Kelpie Triathlon - which includes the Kelpie Dash, Kelpie High Jump and the Kelpie Hill Climb. These events are something to watch and are fiercely contested.

On Sunday, 12th June 2011 the famous Pedigree Working Dog Auction will be held. Last year

more than \$1 million was made in Working Dog Sales. Records were broken, with the highest priced dog achieving \$8600. A Kelpie Puppy was sold for \$1400.

Also in 2011 the Festival will host the Annual Photographic Competition, the new Acquisitive Art Competition, the Quilting Challenge and the Valley Art Competition.



FLY A 747 TO LOS ANGELES A HUGE BUZZ!!  
JASON LIPSON - SHARP GRADUATE

**BECOME A SHARP CADET**

**A GUARANTEED 750 HOURS AERONAUTICAL EXPERIENCE**

**PLUS: GUARANTEED 12-MONTH CADETSHIP IN AUSTRALIA**

**READY FOR TAKE OFF? CALL 1300 55 66 94**  
SHARPAIRLINES.COM.AU



# An Autumn weekend in Melbourne



## Glorious Autumn colour

Start with a stroll through the glorious autumn colour at the Carlton Gardens, on the northern edge of the city. A popular picnic and barbecue area, the heritage-listed Carlton Gardens are home to an array of wildlife, including brushtail possums.

Dramatic tree-lined avenues, a majestic fountain, formal flowerbeds and miniature lakes are features of these late nineteenth century Gardens.

### Up Close

**Address: Victoria Parade, Carlton and Nicholson streets, Carlton**



## Tutankhamun and the Golden Age of the Pharaohs

Uncover the myths of Ancient Egypt when the captivating exhibition Tutankhamun and the Golden Age of the Pharaohs opens at the Melbourne Museum. Learn the history and see artefacts belonging to Ancient Egypt's 'Boy King' before this acclaimed collection returns to Cairo.

Discover more than 130 artefacts, including 50 from the tomb of Tutankhamun, and get an insight into the daily life and burial rituals of Ancient Egypt's 'Golden Age of the Pharaohs'. See statues, mummies, jewellery and weapons along with the crown from the young pharaoh's resting place in the Valley of the Kings.

Don't miss out on this remarkable exhibition that has broken attendance records all across the globe.

### Up Close

**Opens: 8 April 2011**  
**Where: Melbourne Museum**  
**Carlton Gardens, Nicholson Street, Carlton, Melbourne**  
**Tickets:**  
**Tickets available through Ticketek 132 849 and KingTutMelbourne.com.au.**  
**Adult \$39.50**  
**Concession (excludes Seniors Card) \$26.50**  
**Child (4-16 Years) \$17.50**  
**Family \$80.00**



## Melbourne International Comedy Festival

This coming Autumn looks totally foolish with the 2011 Comedy Festival rolling around again throughout March and April – the greatest comedy caper in the Southern Hemisphere.

Great value laughs are dished out by the most popular of local comics and some very special international guests - from stand-up to theatre, music, film and even visual art.

This year gets off to, not one, but two bangs, starting with The Gala and then followed with more celebrations at The Opening Night Allstars Specky Comedy Supershow. Then the party just keeps on

rolling with three and a half weeks' worth of galactic-sized giggles courtesy of the funniest people in the universe.

There's something to satisfy the tastes of everyone - even the stoniest faced naysayers - incorporating the likes of little tykes over the school holidays right through to the midnight schmoozers who can't get enough of a good thing.

### Up Close

**Venue: Melbourne Town Hall and other various venues**  
**Web: [comedyfestival.com.au](http://comedyfestival.com.au)**



## Enter the magical world of The Famous Spiegel Garden

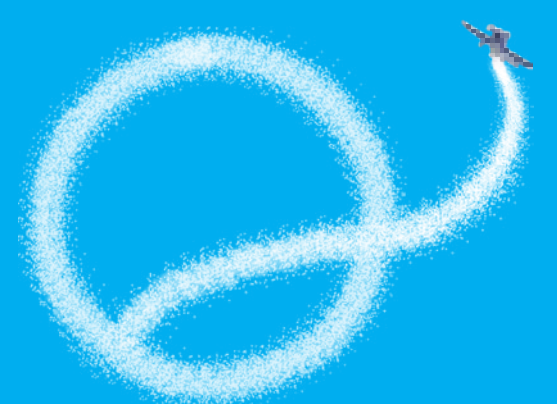
Spend Melbourne's balmy autumn nights beneath the palms as the Arts Centre and surrounds are transformed into decadent gardens buzzing with music and merriment.

Find your corner in The Famous Spiegel Garden to sip cocktails, recline, compete in leisurely games, and witness unforgettable performances in the fabulously baroque Famous Spiegel tent.

Indulge in a pre-event cocktail in the members-room themed Trophy Room in Curve Bar, or the full-size W-class tram. Then touch up the lippy or comb that quiff, 'cause it's time to catch some cabaret, comedy, circus, or new music in The Famous Spiegel tent.

### Up Close

**The Famous Spiegel Garden until 24 Apr 2011**  
**Venue: The Arts Centre**  
**Address: 100 St Kilda Rd, Melbourne**  
**Web: [spiegel.theartscentre.com.au](http://spiegel.theartscentre.com.au)**



There has never been a better time  
**to be with good people.**



QBE Insurance (Australia) Limited  
ABN: 78 003 191 035, AFS Licence No 239545

# Seasonal Delights

Fine Island Dining at Chappells

Chappells Restaurant is a gastronomic highlight of Flinders Island. Situated at Vistas Resort at Trousers Point, Chappells Restaurant was created to provide a fine dining experience for locals and tourists. A focus on fresh, local and organic produce, combined with spectacular views of Mt. Chappell Island, make for a unique fine dining experience.

Chef Ken Stockton and his partner Carolyn Dawe bring a wealth of knowledge and expertise to the restaurant.

"My philosophy is to take the finest produce and do only what is necessary to retain and enhance its inherent tastes and textures. After all, nature has already done its job.

"I believe that the pristine ocean and

lush salt encrusted pastures of Flinders Island carefully nurture those living in or on them. I see my job as bringing out the best in local produce in a simple yet delicious way,

"Each day I choose the best local seafood, lamb, beef and wallaby. Then I have the luxury of choosing more produce from the adjacent organic farm, then find herbs just a step away in Vistas Eco Resort's conservatory. I also give specialised cooking classes – they help me to pass on my passion for the local produce of Flinders Island," said Ken.

Front of House is Carolyn's domain and diners can enjoy the open fire and comfy lounges pre or post dining.

"We want to make sure our guests have a memorable experience when they dine with us here at Chappells Restaurant. Quite often we find guests linger for a coffee or another glass of Tasmanian wine, long after they have finished eating," Carolyn said.

## Scallops "Ann Chappell" Serves 4

- 500 grams Flinders Island scallops
- 1 stick lemongrass
- 10-12 torn mint leaves
- 250 mls verjuice
- 2 stalks fresh coriander
- 50 grams fresh ginger
- 1 teaspoon of sugar
- Sea salt & ground pepper to taste



Crush the inner lemongrass stick with the back of a chef's knife and place in a bowl which you will use for marinating. Add the verjuice or rice wine vinegar. Finely chop and add the coriander, torn mint and ginger. Add a pinch of sea salt, cracked pepper and one teaspoon of sugar.

Clean the scallops and add them to the marinade. Cover and refrigerate for 2 hours. Remove from the fridge and

drain the liquid, straining the verjuice so it is free of marinade debris. Retain the verjuice.

The scallops can then be fine sliced and served sashimi style with chopsticks and the verjuice. Or you can blanch the scallops for 30 seconds in boiling salted water. Heat the verjuice in a pan and pour over the scallops served in a scallop shell. Add a dash of warm vodka.



## Ken's recipes and tips for cooking Flinders Island Seafood.

"Scallops are delicate morsels which perfectly capture the flavour of the sea. When you bite them, you should get a burst of sea flavours. If you overcook them they drop that flavour and shrink. Cooking time should never exceed 2 minutes. If you are cooking them in a sauce, then bring that sauce up to simmer and place the scallops in the pan individually, not in a pile, so they cook evenly. Or you can prepare your sauce and quickly sear the scallops on a hot griddle for 10 seconds each side. Australian scallops normally have their roe intact - imported scallops will not and will contain excess water and less flavour."

### Scallops "Ken Worsley" Serves 4

- 500 grams Flinders Island scallops
- 1 medium brown onion finely diced
- 1 small red capsicum finely diced
- 1 glove garlic diced
- 300 mls light cream
- 100 mls white wine
- 1 tablespoon Dijonaise
- Salt/pepper to taste
- Spring onion and dill to garnish

Cook onions, garlic and capsicum in a frying pan with a little oil. Add the Dijonaise, white wine and light cream. Bring up to just below boiling. Simmer for 5 mins. Season to taste. Add scallops, cook for 2 minutes. Serve on a pastry crouton or in a vol au vent case, or scallop shell. Garnish with spring onions and dill.

### Up Close

Chappells Restaurant  
 Vistas On Trousers Point  
 Trousers Point Road, Flinders Island  
 Phone: 03 6359 4586  
 Web: [vistasontrouserspoint.com.au](http://vistasontrouserspoint.com.au)



# A warm welcome in the heart of Adelaide

The team at Quest on King William pride themselves on the warm welcome they extend to all the guests staying at their serviced apartments in the heart of the city.

Quest On King William is conveniently located in the centre of Adelaide and is close to all CBD business precincts. It is a popular choice for the business and leisure traveller or those who are simply taking time out.

Within moments guests can reach Adelaide's most popular attractions including Rundle Mall, Adelaide Central Markets, Sky City Casino, Adelaide Conventions Centre, Adelaide Festival Centre, Museum, Art Gallery of South Australia, and the famous Adelaide Oval.

Quest on King William's well-appointed AAA 4 star property features spacious studio, one and two bedroom apartments, accompanied by an extensive range of services including valet dry cleaning, pantry shopping service and breakfast packs.

The apartments are modern and have the feel of a hotel but are much more spacious, offering cooking facilities. Most of the apartments have separate bedrooms, a living/dining room, comfortable couch and stylish décor.

Whether travelling for work or a holiday, Quest Serviced Apartments offers a range of dining options to suit every guest's needs.

The majority of apartments contain kitchen facilities, allowing guests to cook for themselves in the comfort of their apartment. Otherwise, there are a number of local restaurant options you can try and charge the bill back to your accommodation account.

Quest's pantry shopping service offers a comprehensive and convenient way to fill the pantry, especially if guests are busy with work or sightseeing. A shopping list is available for guests to choose their groceries, which will be delivered to the apartment by the Quest on King William team.

Conference and business facilities are also available, as is assistance with tour booking and baby sitting.

### Up Close

Quest on King William  
 Location: 82 King William Street, Adelaide  
 Contact: 08 8217 5000  
 Email: [questkingwilliam@questapartments.com.au](mailto:questkingwilliam@questapartments.com.au)  
 Website: [questonkingwilliam.com.au](http://questonkingwilliam.com.au)



# Sharp Minds

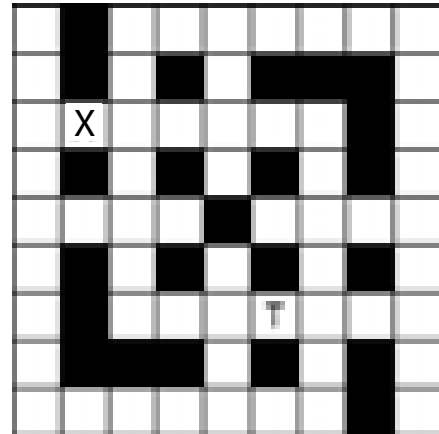
Sharpen your brain with these tricky little quizzes!

## SUDOKU

|   |   |   |   |   |   |   |   |   |
|---|---|---|---|---|---|---|---|---|
|   | 6 |   |   | 4 | 5 |   |   |   |
|   |   | 2 |   |   |   |   |   |   |
|   | 5 | 1 | 6 |   |   | 7 | 3 | 4 |
|   | 9 |   |   |   | 1 |   |   | 2 |
| 2 |   |   |   | 3 |   |   |   |   |
|   |   |   | 8 |   |   |   |   |   |
| 9 |   |   |   |   | 3 |   | 6 |   |
|   |   | 5 |   | 7 |   |   | 4 |   |
|   | 4 |   |   | 1 |   |   |   | 5 |

## WORD FIT

Can you fit all the words correctly into the grid?  
Two letters have already been entered.



### 4 letter words

AREA  
BAND  
KNEE  
TOES

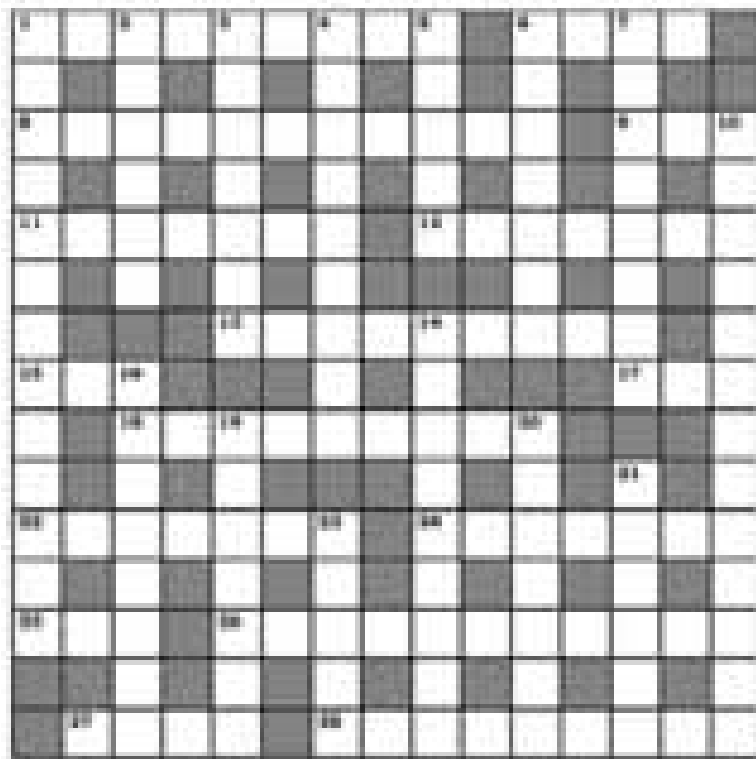
### 7 letter words

ACTRESS  
ANTIQU  
EARLIER  
EXTREME  
SKATING  
THUNDER

### 9 letter words

BREAKFAST  
EXCHANGED

## CRYPTIC CROSSWORD



### Across

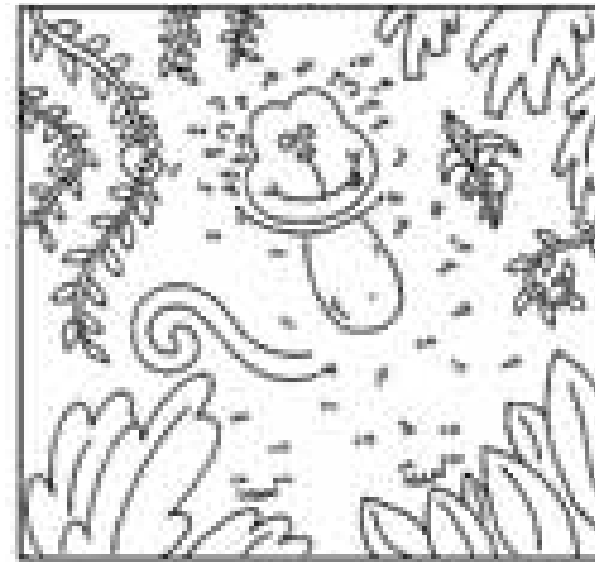
- Ring the stall to pay for your trip here (9)
- Crop bring credit and a lot of awe (4)
- Magicians on the outskirts of London worried about the principles of the C of E (11)
- Finish mend without starting machine (3)
- Surroundings of alien in deception (7)
- Ancient Egyptian dead. Beat that. (3,4)
- Plenty of room for brains, but do such people use them (3-6)
- A peculiar island drink (3)
- A measure to sell short (3)
- Publish too many? Excess to impress (9)
- Immediate stain messed up the NT (7)
- Getting out was stirring, though without a hundred (7)
- One new prefix (3)
- The day of choice for the first woman? No, the day before (6)
- Only a lake boundary (4)
- I defy lash wielded on parts of farm (9)

### Down

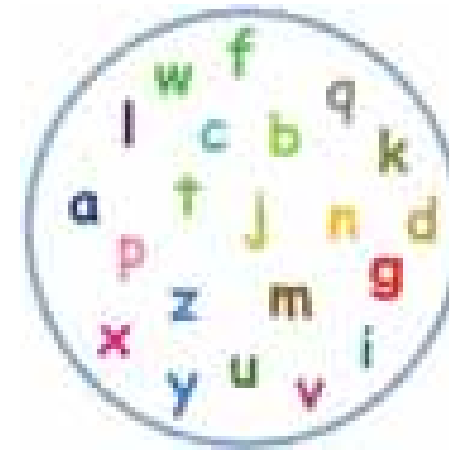
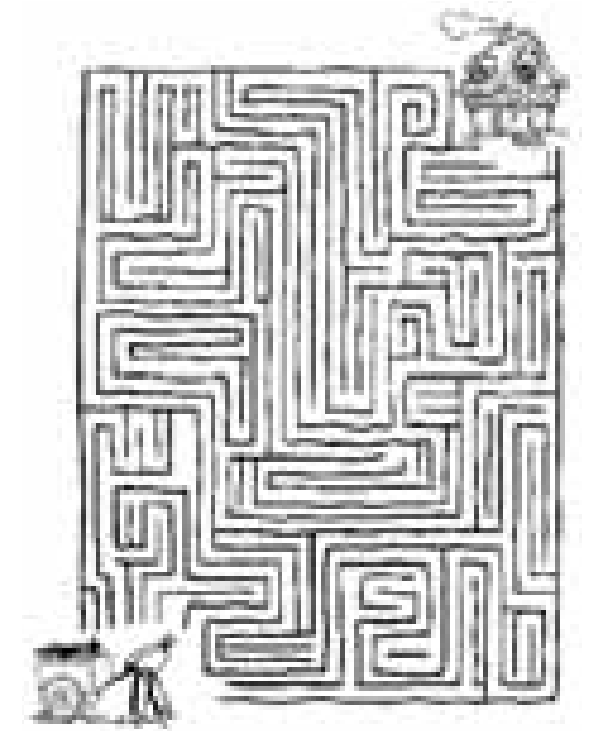
- With limited allowance, I run in torn pants, giving off vapour (13)
- Small change from first to last gives illumination (6)
- Strike contains trouble for agent (7)
- End of fruit? It's the European butterfly (6-3)
- Raise washing. Is hot, mangled (5)
- In short arrive, repair, praise (7)
- Capital queen (8)
- Insect parent not short on supports (5-4-4)
- Wicked unknown hides depression, obviously (9)
- Primitive plant went upward, produced fine flowers (4,4)
- Age tree to make display stand (7)
- Spilled oil after journey to capital (7)
- One panel shaped like a cone (6)
- Note the mongrel canines (5)

# Sharp Kids

## JOIN THE DOTS



## MAZE



Some letters of the alphabet are missing from the circle. Can you use the missing letters to find an animal?

## ANSWERS

WORD FIT

|   |   |   |   |   |   |
|---|---|---|---|---|---|
| E | A | R | E | A | E |
| R | I | A | R | O | D |
| A | N | T | I | Q | U |
| E | A | T | R | E | M |
| A | K | E | A | K | E |
| K | N | E | E | A | K |
| A | O | V | E | R | P |
| A | S | C | O | L | E |
| S | T | U | N | D | E |

CROSSWORD

|   |   |   |   |   |   |   |   |   |   |   |   |
|---|---|---|---|---|---|---|---|---|---|---|---|
| T | O | L | L | O | O | T | H | C | R | A | W |
| R | I | A | R | O | O | D |   |   |   |   |   |
| A | N | T | I | Q | U |   |   |   |   |   |   |
| S | E | T | I | N | O |   |   |   |   |   |   |
| P | S | F | E |   |   |   |   |   |   |   |   |
| I | P | A | T | H | A | D | D |   |   |   |   |
| K | N | E | E | A | K |   |   |   |   |   |   |
| A | O | V | E | R | P |   |   |   |   |   |   |
| I | P | S | A | N | D |   |   |   |   |   |   |
| O | R | G | E |   |   |   |   |   |   |   |   |
| N | E | O |   |   |   |   |   |   |   |   |   |
| M | E | R | E |   |   |   |   |   |   |   |   |

SUDOKU

|   |   |   |   |   |   |   |   |   |
|---|---|---|---|---|---|---|---|---|
| 7 | 6 | 9 | 3 | 8 | 4 | 2 | 5 | 1 |
| 4 | 3 | 2 | 1 | 5 | 7 | 6 | 8 | 9 |
| 8 | 5 | 1 | 6 | 9 | 2 | 7 | 3 | 4 |
| 5 | 9 | 3 | 4 | 6 | 1 | 8 | 7 | 2 |
| 2 | 8 | 4 | 7 | 3 | 9 | 5 | 1 | 6 |
| 1 | 7 | 6 | 8 | 2 | 5 | 4 | 9 | 3 |
| 9 | 2 | 8 | 5 | 4 | 3 | 1 | 6 | 7 |
| 3 | 1 | 5 | 2 | 7 | 6 | 9 | 4 | 8 |
| 6 | 4 | 7 | 9 | 1 | 8 | 3 | 2 | 5 |



# The Sharp Traveller

**Would you like to advertise?**

We can provide advertising packages for The Sharp Traveller Magazine and Sharp Airlines Website. Which incorporate both advertising and editorial features.

**1300 30 48 03** Email: [marketing@sharpairlines.com.au](mailto:marketing@sharpairlines.com.au)




## Is your business looking to reach a greater audience?

| Market Potentials |         |
|-------------------|---------|
| Target            |         |
| People 18-39      | 33,700  |
| People 25-54      | 52,700  |
| Grocery Buyers    | 57,500  |
| Total People      | 136,600 |

Then use the "Power of Television". Southern Cross Media is Australia's largest regional Multi Media Company. Reach more Australians and put your Business Top of Mind. To find out how we can help your Business grow give us a call.

**Ph: 08 8638 3400**




# Melbourne Flight Schedules From 1<sup>st</sup> March to 24<sup>th</sup> December 2011

# Adelaide Flight Schedules From 27<sup>th</sup> April to 24<sup>th</sup> December 2011

| →Melbourne (Essendon) to Hamilton |                |              |              |                |            |
|-----------------------------------|----------------|--------------|--------------|----------------|------------|
| Essendon to Hamilton              | Departure time | Arrival Time | Flight No.   | Frequency      | No. Stops  |
|                                   | 0820           | 0910         | SHARP822     | M T W T F . .  | NON STOP   |
|                                   | 1120           | 1210         | SHARP834     | . . . . . Sa . | NON STOP   |
|                                   | 1445           | 1625         | SHARP872/827 | . . W . . . .  | 1 STOP POD |
|                                   | 1650           | 1740         | SHARP842     | . . . . . Su   | NON STOP   |
|                                   | 1755           | 1845         | SHARP828     | M . W . F . .  | NON STOP   |
|                                   | 1910           | 2000         | SHARP828     | . T . T . . .  | NON STOP   |
| Hamilton to Essendon              |                |              |              |                |            |
|                                   | 0705           | 0750         | SHARP821     | M T W T F . .  | NON STOP   |
|                                   | 0925           | 1100         | SHARP822/871 | . . W . . . .  | 1 STOP POD |
|                                   | 1005           | 1050         | SHARP833     | . . . . . Sa . | NON STOP   |
|                                   | 1535           | 1620         | SHARP841     | . . . . . Su   | NON STOP   |
|                                   | 1640           | 1725         | SHARP827     | M . W . F . .  | NON STOP   |
|                                   | 1755           | 1840         | SHARP827     | . T . T . . .  | NON STOP   |

| →Melbourne (Essendon) to Portland |                |              |            |                |            |
|-----------------------------------|----------------|--------------|------------|----------------|------------|
| Melbourne (Essendon) to Portland  | Departure time | Arrival Time | Flight No. | Frequency      | No. Stops  |
|                                   | 0645           | 0800         | SHARP824   | . T . F . .    | 1 STOP AVV |
|                                   | 0820           | 0945         | SHARP822   | M T W T F . .  | 1 STOP HML |
|                                   | 1120           | 1245         | SHARP834   | . . . . . Sa . | 1 STOP HML |
|                                   | 1445           | 1545         | SHARP872   | . . W . . . .  | NON STOP   |
|                                   | 1600           | 1715         | SHARP832   | . T . F . .    | 1 STOP AVV |
|                                   | 1650           | 1815         | SHARP842   | . . . . . Su   | 1 STOP HML |
|                                   | 1755           | 1920         | SHARP828   | M . W . F . .  | 1 STOP HML |
|                                   | 1910           | 2035         | SHARP828   | . T . T . . .  | 1 STOP HML |
| Portland to Melbourne (Essendon)  |                |              |            |                |            |
|                                   | 0630           | 0750         | SHARP821   | M T W T F . .  | 1 STOP HML |
|                                   | 0815           | 0930         | SHARP823   | . T . F . .    | 1 STOP AVV |
|                                   | 0930           | 1050         | SHARP833   | . . . . . Sa . | 1 STOP HML |
|                                   | 1005           | 1100         | SHARP871   | . . W . . . .  | NON STOP   |
|                                   | 1500           | 1620         | SHARP841   | . . . . . Su   | 1 STOP HML |
|                                   | 1605           | 1725         | SHARP827   | M . W . F . .  | 1 STOP HML |
|                                   | 1720           | 1840         | SHARP827   | . T . T . . .  | 1 STOP HML |
|                                   | 1730           | 1845         | SHARP831   | . T . F . .    | 1 STOP AVV |

| →Adelaide to Mildura (+ = Eastern Standard Time) |                |              |            |               |           |
|--------------------------------------------------|----------------|--------------|------------|---------------|-----------|
| Adelaide to Mildura                              | Departure time | Arrival Time | Flight No. | Frequency     | No. Stops |
|                                                  | 0700           | 0830+        | SHARP863   | M . . . . F   | NON-STOP  |
|                                                  | 0910           | 1040+        | SHARP863   | . . W T . . . | NON-STOP  |
|                                                  | 1700           | 1830+        | SHARP873   | M . W T F . . | NON-STOP  |
|                                                  | 1725           | 1855+        | SHARP879   | . . . . . Su  | NON-STOP  |
| Mildura to Adelaide                              |                |              |            |               |           |
|                                                  | 0845+          | 0915         | SHARP864   | M . . . . F   | NON-STOP  |
|                                                  | 1055+          | 1125         | SHARP864   | . . W T . . . | NON-STOP  |
|                                                  | 1845+          | 1915         | SHARP874   | M . W T F . . | NON-STOP  |
|                                                  | 1910+          | 1940         | SHARP880   | . . . . . Su  | NON-STOP  |

| →Adelaide to Port Augusta |                |              |            |               |           |
|---------------------------|----------------|--------------|------------|---------------|-----------|
| Adelaide to Port Augusta  | Departure time | Arrival Time | Flight No. | Frequency     | No. Stops |
|                           | 0645           | 0735         | SHARP861   | M T W T F     | NON-STOP  |
|                           | 1315           | 1405         | SHARP866   | . T . T . . . | NON-STOP  |
|                           | 1500           | 1550         | SHARP877   | . . . . . Su  | NON-STOP  |
|                           | 1715           | 1805         | SHARP867   | M . W . F . . | NON-STOP  |
| Port Augusta to Adelaide  |                |              |            |               |           |
|                           | 0750           | 0840         | SHARP862   | M T W T F     | NON-STOP  |
|                           | 1605           | 1655         | SHARP878   | . . . . . Su  | NON-STOP  |
|                           | 1720           | 1805         | SHARP865   | . T . T . . . | NON-STOP  |
|                           | 1820           | 1910         | SHARP868   | M . W . F . . | NON-STOP  |

| →Adelaide to Portland (+ = Eastern Standard Time) |                |              |            |               |            |
|---------------------------------------------------|----------------|--------------|------------|---------------|------------|
| Adelaide to Portland                              | Departure time | Arrival Time | Flight No. | Frequency     | No. Stops  |
|                                                   | 0910           | 1125+        | SHARP883   | M . . . . .   | 1 STOP HML |
|                                                   | 1320           | 1535         | SHARP883   | . . . . F . . | 1 STOP HML |
| Portland to Adelaide                              |                |              |            |               |            |
|                                                   | 1155+          | 1235         | SHARP882   | M . . . . .   | NON-STOP   |
|                                                   | 1605+          | 1645         | SHARP882   | . . . . F . . | NON-STOP   |

| →Adelaide to Hamilton (+ = Eastern Standard Time) |                |              |            |               |            |
|---------------------------------------------------|----------------|--------------|------------|---------------|------------|
| Adelaide to Hamilton                              | Departure time | Arrival Time | Flight No. | Frequency     | No. Stops  |
|                                                   | 0910           | 1045+        | SHARP883   | M . . . . .   | NON-STOP   |
|                                                   | 1320           | 1455+        | SHARP883   | . . . . F . . | NON-STOP   |
| Hamilton to Adelaide                              |                |              |            |               |            |
|                                                   | 1105+          | 1235         | SHARP882   | M . . . . .   | 1 STOP POD |
|                                                   | 1515+          | 1645         | SHARP882   | . . . . F . . | 1 STOP POD |

# Geelong (Avalon) Flight Schedules From 8<sup>th</sup> March to 24<sup>th</sup> December 2011

| →Avalon to Portland |                |              |            |             |           |
|---------------------|----------------|--------------|------------|-------------|-----------|
| Avalon to Portland  | Departure time | Arrival Time | Flight No. | Frequency   | No. Stops |
|                     | 0715           | 0800         | SHARP824   | . T . F . . | NON-STOP  |
|                     | 1630           | 1715         | SHARP832   | . T . F . . | NON-STOP  |
| Portland to Avalon  |                |              |            |             |           |
|                     | 0815           | 0900         | SHARP823   | . T . F . . | NON-STOP  |
|                     | 1730           | 1815         | SHARP831   | . T . F . . | NON-STOP  |

## Sharp Airlines Office Hours

Sharp Airlines have new office hours

Monday to Friday - 7am to 7pm EST

Saturday - 9am to 12pm EST

Sunday - 1pm to 6pm EST

Public Holidays - 10am to 5pm EST

CLOSED - Good Friday and Christmas Day

Please note these schedules are subject to change without notice please visit [sharpairlines.com.au](http://sharpairlines.com.au) for the latest information.

Please refer to [sharpairlines.com.au](http://sharpairlines.com.au) for flight availability on public holidays\*

**Phone: 1300 55 66 94**



## Flinders Island Flight Schedules From 2<sup>nd</sup> April to 7<sup>th</sup> May 2011

| → Flinders - Launceston       |                |              |            |               |           |
|-------------------------------|----------------|--------------|------------|---------------|-----------|
| Flinders Island - Launceston  | Departure time | Arrival Time | Flight No. | Frequency     | No. Stops |
|                               | 0855           | 0930         | SHARP802   | M T W T F S . | NON-STOP  |
|                               | 1455           | 1530         | SHARP806   | M . W . F . . | NON-STOP  |
|                               | 1655           | 1730         | SHARP808   | M T W T F . . | NON-STOP  |
|                               | 1655           | 1730         | SHARP814   | . . . . . Su  | NON-STOP  |
| Launceston to Flinders Island | Departure time | Arrival Time | Flight No. | Frequency     | No. Stops |
|                               | 0800           | 0835         | SHARP801   | M T W T F S . | NON-STOP  |
|                               | 1000           | 1035         | SHARP803   | M . W . F . . | NON-STOP  |
|                               | 1300           | 1335         | SHARP811   | . . . . . Su  | NON-STOP  |
|                               | 1600           | 1635         | SHARP807   | M T W T F . . | NON-STOP  |

| → Flinders Island to Melbourne (Essendon) |                |              |            |               |           |
|-------------------------------------------|----------------|--------------|------------|---------------|-----------|
| Flinders Island - Essendon                | Departure time | Arrival Time | Flight No. | Frequency     | No. Stops |
|                                           | 1055           | 1200         | SHARP804   | M . W . F . . | NON-STOP  |
|                                           | 1355           | 1500         | SHARP812   | . . . . . Su  | NON-STOP  |
| Essendon to Flinders Island               | Departure time | Arrival Time | Flight No. | Frequency     | No. Stops |
|                                           | 1330           | 1435         | SHARP805   | M . W . F . . | NON-STOP  |
|                                           | 1530           | 1635         | SHARP813   | . . . . . Su  | NON-STOP  |

## Flinders Island Flight Schedules From 8<sup>th</sup> May to 1<sup>st</sup> October 2011

| → Flinders - Launceston       |                |              |            |               |           |
|-------------------------------|----------------|--------------|------------|---------------|-----------|
| Flinders Island - Launceston  | Departure time | Arrival Time | Flight No. | Frequency     | No. Stops |
|                               | 0855           | 0930         | SHARP802   | M T W T F S . | NON-STOP  |
|                               | 1455           | 1530         | SHARP806   | M . W . F . . | NON-STOP  |
|                               | 1655           | 1730         | SHARP808   | M T W T F . . | NON-STOP  |
|                               | 1655           | 1730         | SHARP814   | . . . . . Su  | NON-STOP  |
| Launceston to Flinders Island | Departure time | Arrival Time | Flight No. | Frequency     | No. Stops |
|                               | 0800           | 0835         | SHARP801   | M T W T F S . | NON-STOP  |
|                               | 1000           | 1035         | SHARP803   | M . W . F . . | NON-STOP  |
|                               | 1600           | 1635         | SHARP811   | . . . . . Su  | NON-STOP  |
|                               | 1600           | 1635         | SHARP807   | M T W T F . . | NON-STOP  |

| → Flinders Island to Melbourne (Essendon) |                |              |            |               |           |
|-------------------------------------------|----------------|--------------|------------|---------------|-----------|
| Flinders Island - Essendon                | Departure time | Arrival Time | Flight No. | Frequency     | No. Stops |
|                                           | 1055           | 1200         | SHARP804   | M . W . F . . | NON-STOP  |
| Essendon to Flinders Island               | Departure time | Arrival Time | Flight No. | Frequency     | No. Stops |
|                                           | 1330           | 1435         | SHARP805   | M . W . F . . | NON-STOP  |

# See more of Adelaide



Adelaide Airport welcomes Sharp Airline's expansion of its Adelaide schedule - with flights to and from Mildura, Port Augusta, Avalon and now Portland.

And with Adelaide Airport only 6km from the CBD, you'll spend more time sampling a Barossa Valley red or McLaren Vale white at a cosy Rundle Street cafe or Gouger Street bistro, and less time staring out of a car window.

**Australian Capital City Airport of the Year 2006 and 2009**

[www.aal.com.au](http://www.aal.com.au)

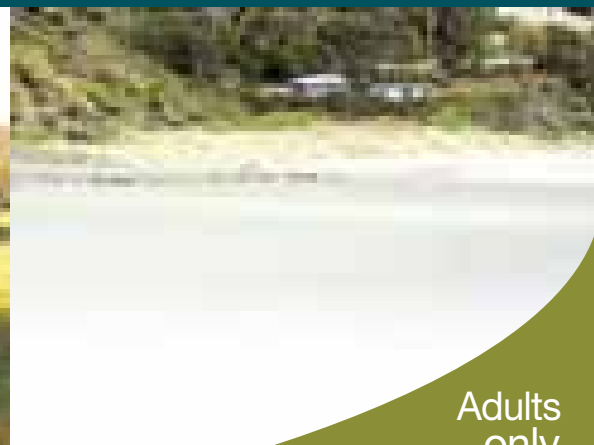
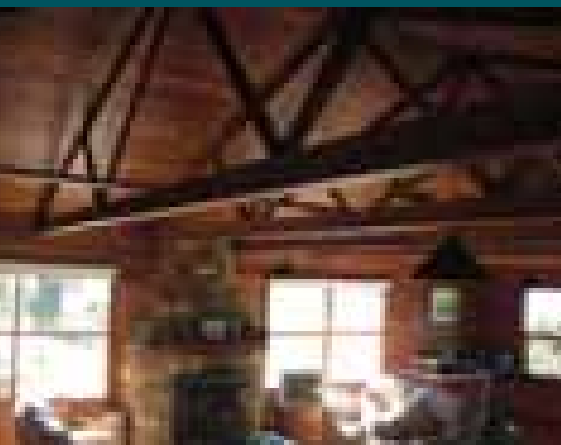




# Palana Beach House

A well equipped home by a beautiful beach that's all your own. Listen to the sounds of the waves, from the house gaze out to the sea, the Inner & Outer Sister Islands, a coastline that is unspoilt, and when you feel like it, take 65 steps to experience the Imax panorama!!!!

Contact: [griggsys@gmail.com](mailto:griggsys@gmail.com)    [www.flindersislandbeach.com](http://www.flindersislandbeach.com)



Adults  
only